

4

3

2

1

D

D

C

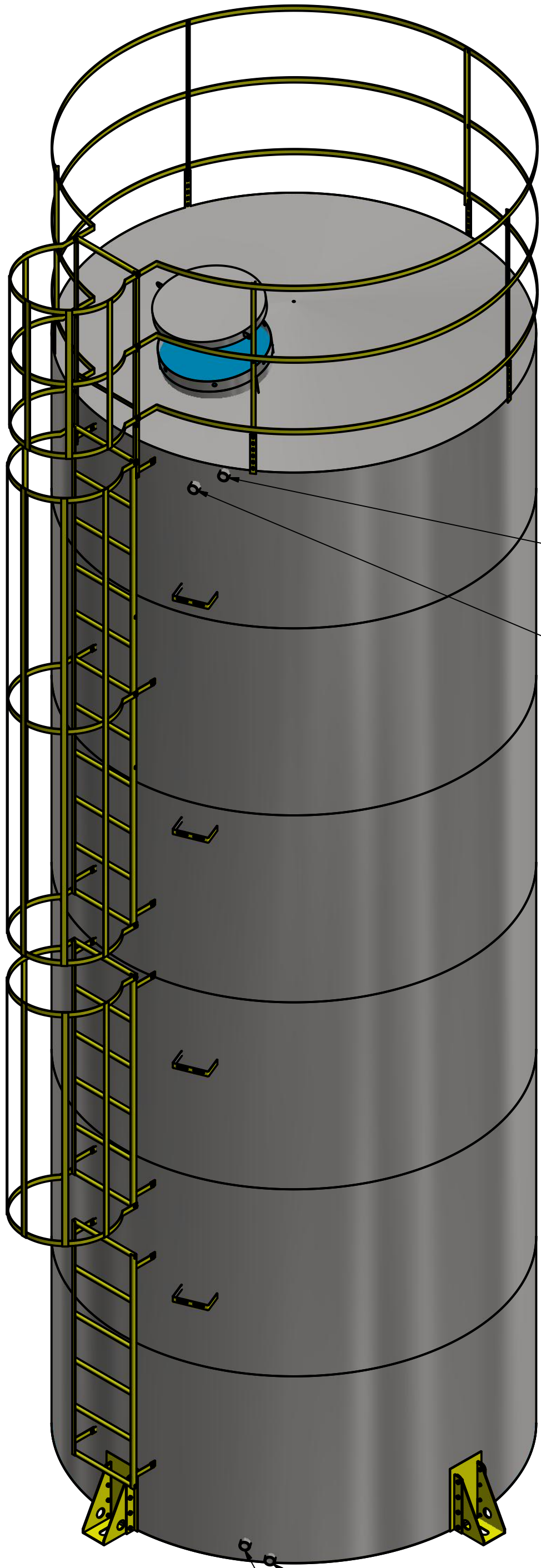
C

B

B

A

A

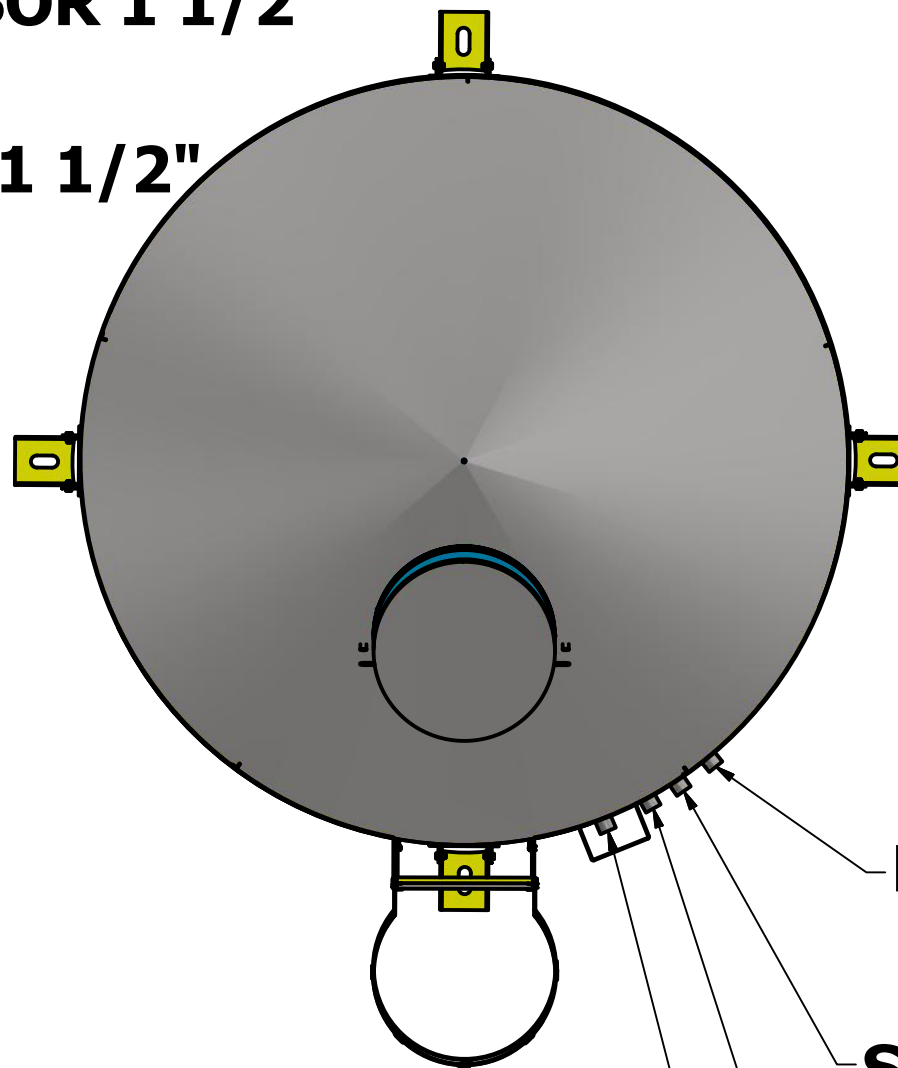


EXTRAVASOR 1 1/2"

ENTRADA 1 1/2"

DRENO 1 1/2"

SAÍDA 1 1/2"



DRENO 1 1/2"

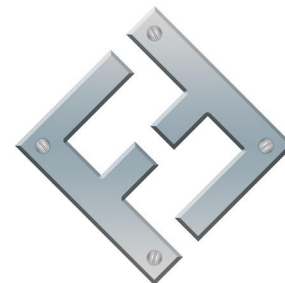
SAÍDA 1 1/2"

EXTRAVASOR 1 1/2"

ENTRADA 1 1/2"

DRAWN
Jander Dantas 07/04/2015

FAZ FORTE RESERVATORIOS METALICOS



PADRAO

TBL 3501

FAZFORTE

| | | |
|-----------|--------------------|-----|
| SIZE C | DWG NO TBL 3501 | REV |
| SCALE | SHEET 1 OF 4 | |

4

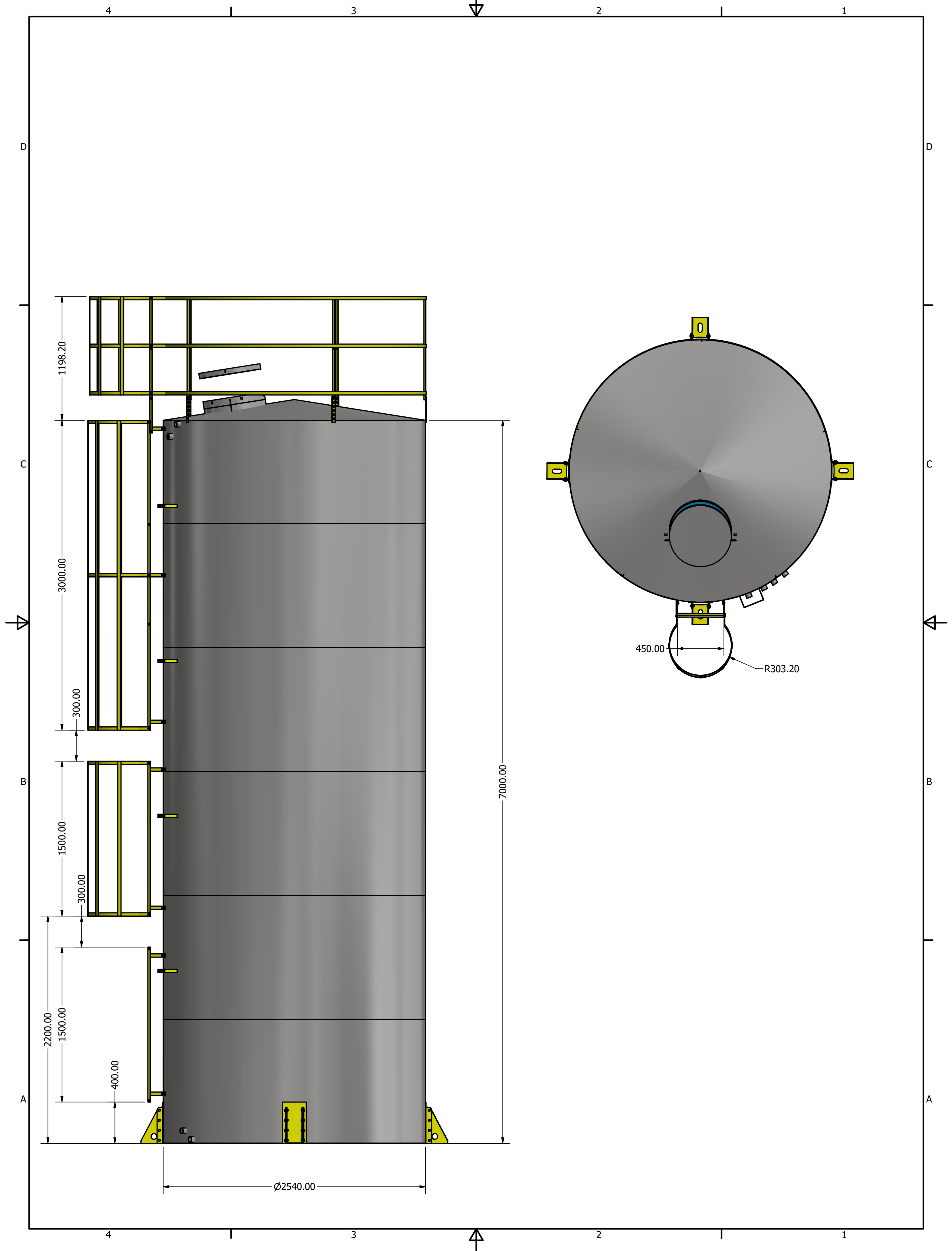
3

2

1

A

A



4

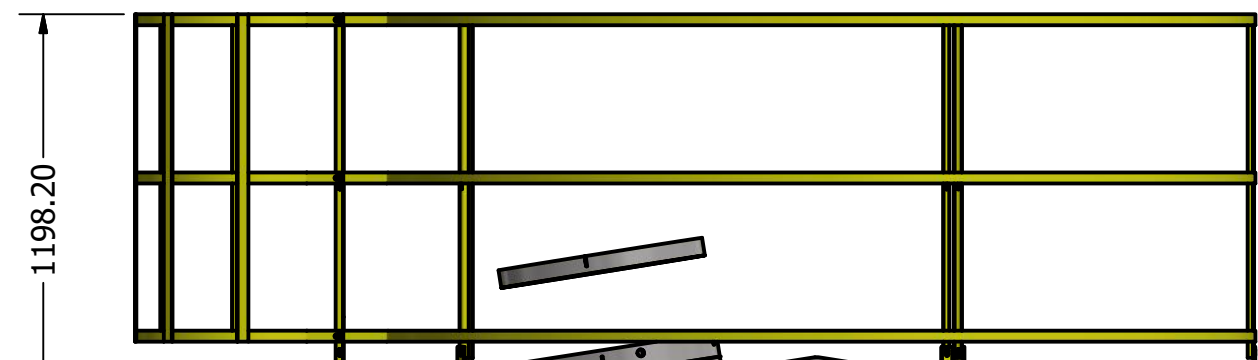
3

2

1

D

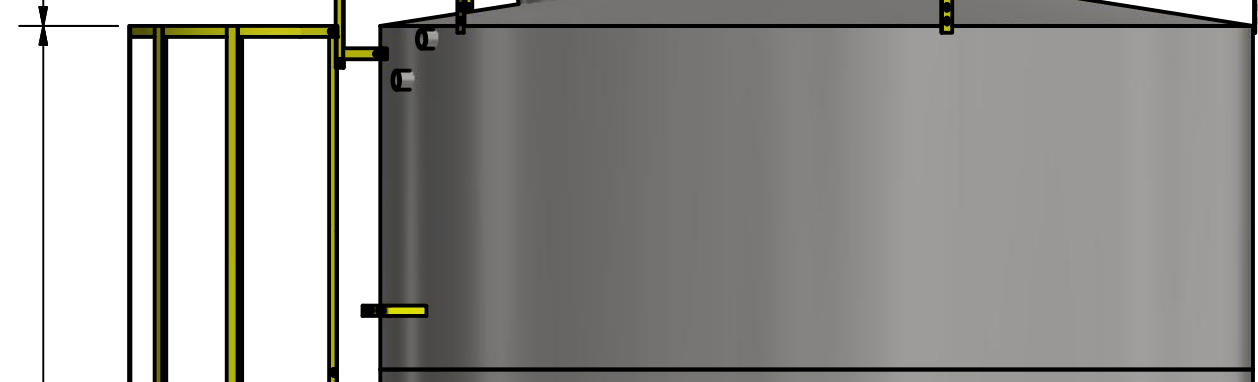
D



1198.20

C

C

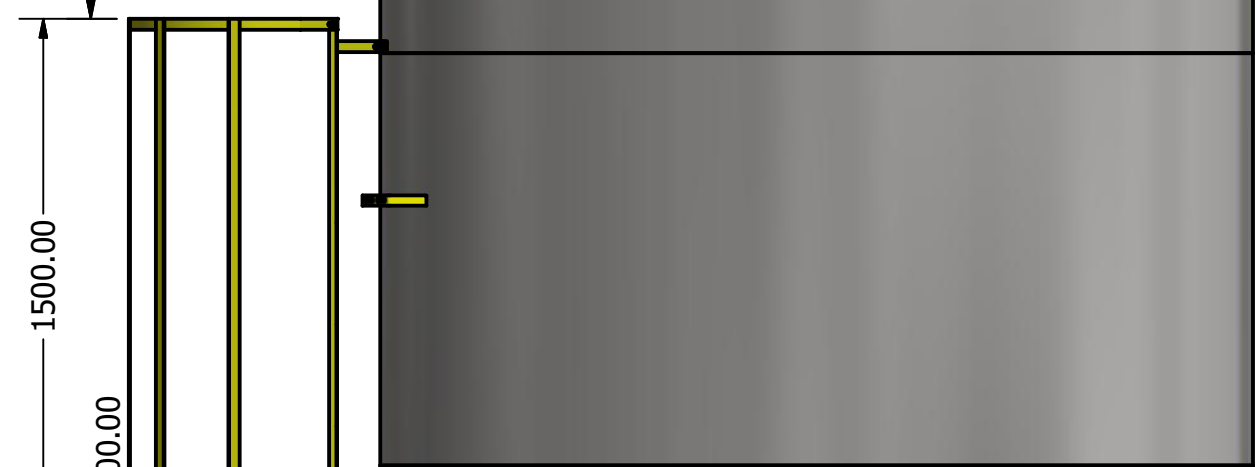


3000.00

300.00

B

B

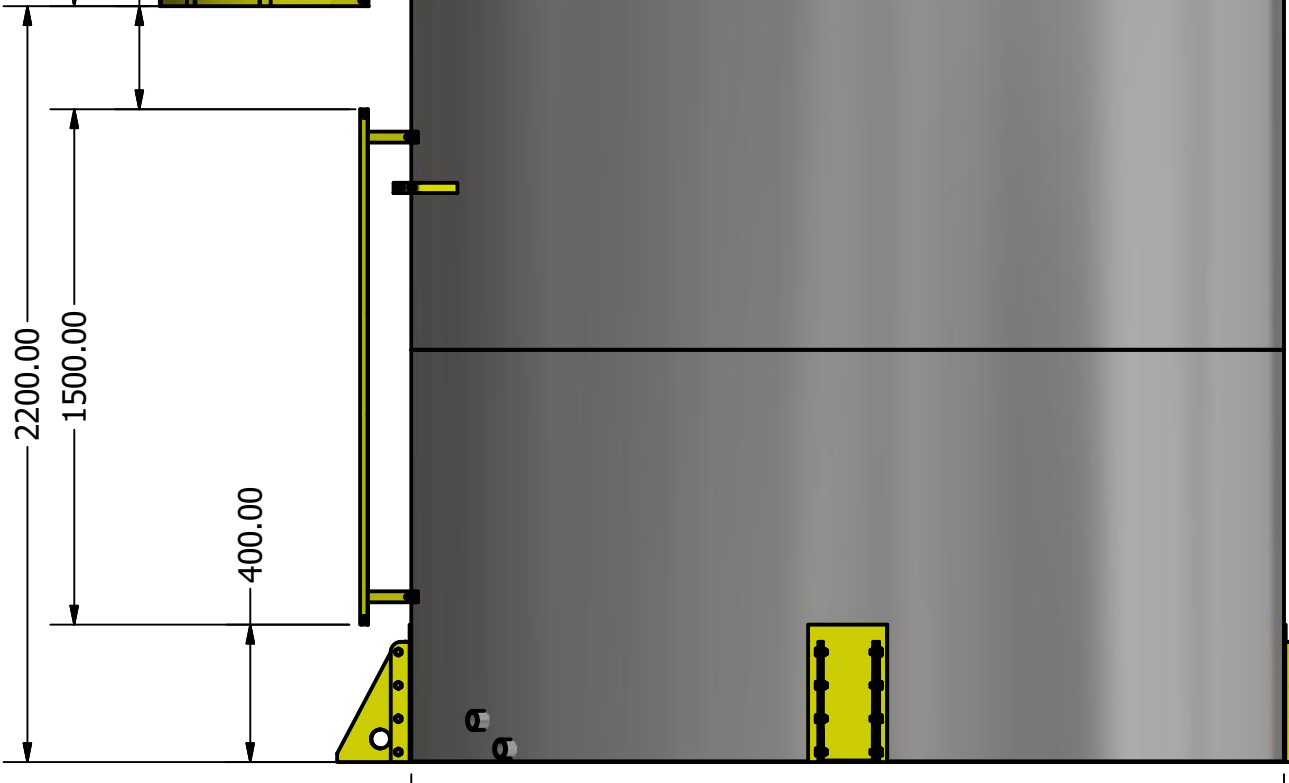


1500.00

300.00

A

A



2200.00

1500.00

400.00

450.00

R303.20

7000.00

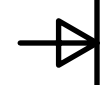
Ø2540.00

4

3

2

1



4

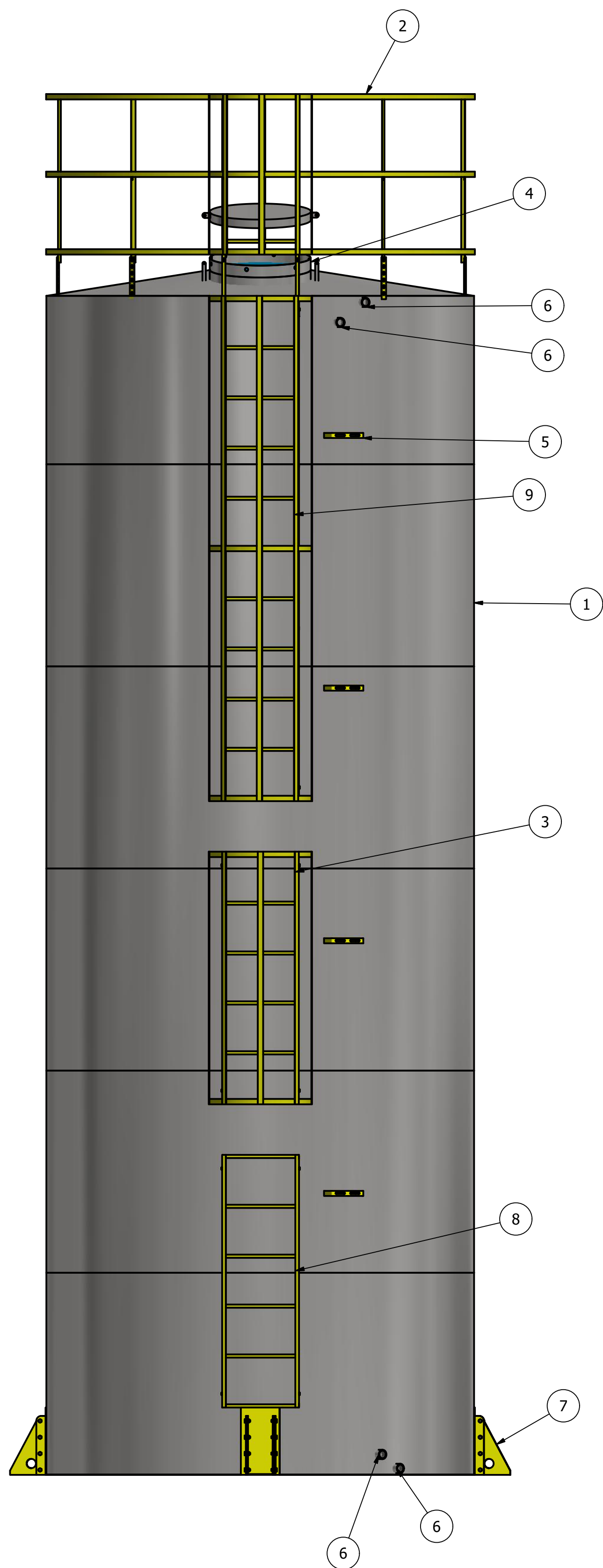
3

2

1

LISTA DE PEÇAS

| ITEM | QTD | NÚM. DE PEÇA | DESCRIÇÃO | MASSA |
|------|-----|-------------------------------|-----------|-----------|
| 1 | 1 | TBL 3501 CASCA | | |
| 2 | 1 | GRADE SEGURANÇA 2540 | | 34,602 kg |
| 3 | 1 | escada guardacorpo 1,5 metros | | 14,538 kg |
| 4 | 1 | tampa inspeção | | 8,869 kg |
| 5 | 4 | suporte tubulação | | 0,279 kg |
| 6 | 4 | ISO 4144 - Bolsa S2 1 1/2 | | 0,322 kg |
| 7 | 4 | pes 350 MM | | 9,176 kg |
| 8 | 1 | escada 1.5 metros | | 5,917 kg |
| 9 | 1 | ESCADA PADRAO 3 METROS | | 27,087 kg |



4

3

2

1