

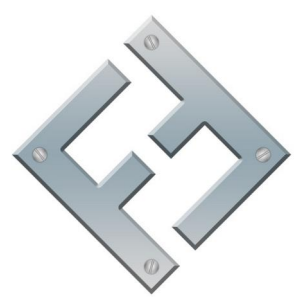
ENTRADA 1 1/2"
 EXTRAVASOR 1 1/2"
 DRENO 1 1/2"
 SAÍDA 1 1/2"

ENTRADA 1 1/2"

EXTRAVASOR 1 1/2"
 DRENO 1 1/2"
 SAÍDA 1 1/2"

RESPIRO 4"

RESPIRO 4"

PROJETISTA Erik Felipe		13/08/2020		FAZ FORTE RESERVATORIOS METALICOS	
		NOME EMPRESA: TBL 1001			
SIZE C	DWG NO TBL 1001	REV		SHEET 1 OF 5	
SCALE					SHEET 1 OF 5

4

3

2

1

D

D

C

C

B

B

A

A

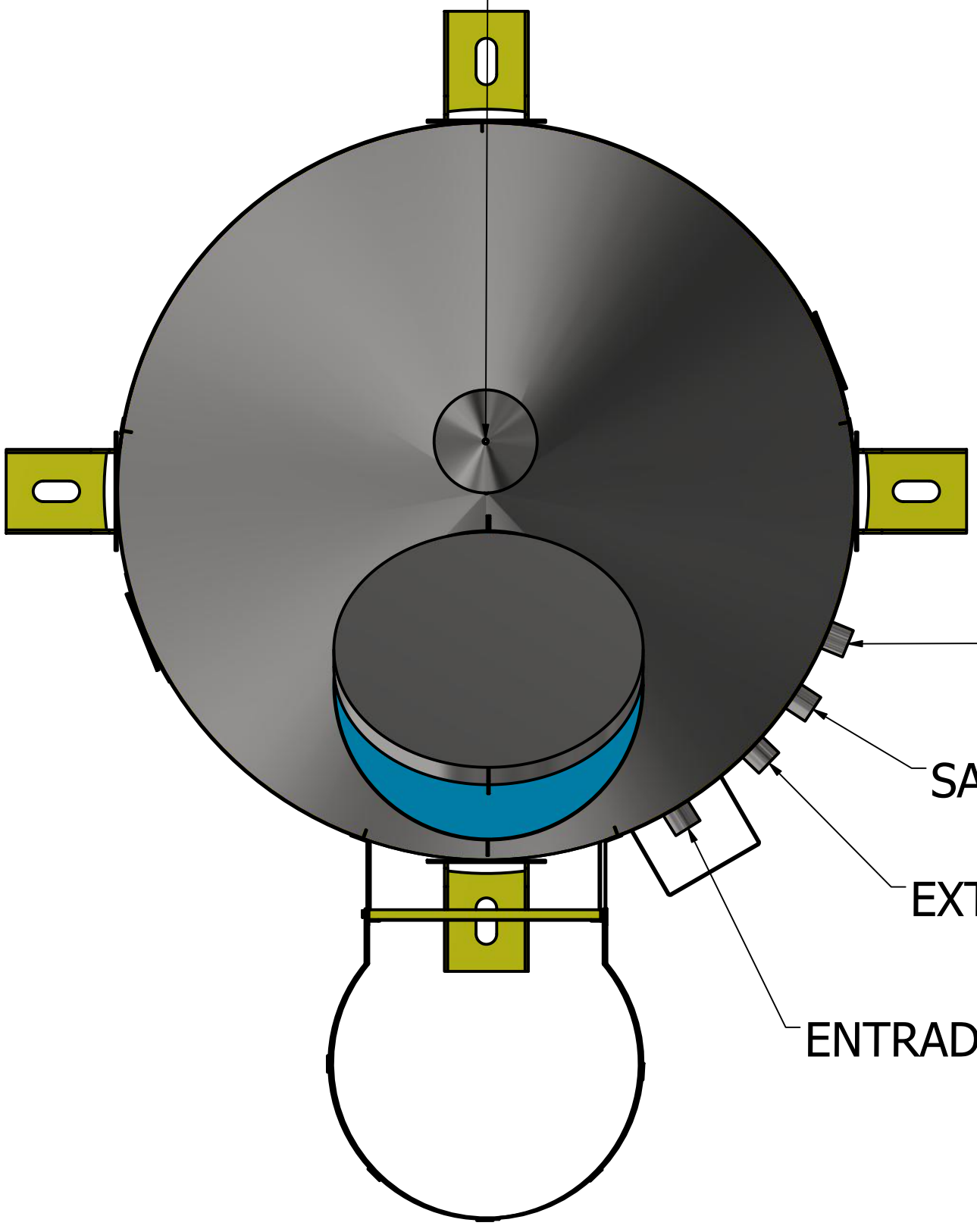
4

3

2

1

RESPIRO 4"



DRENO 1 1/2"

SAÍDA 1 1/2"

EXTRAVASOR 1 1/2"

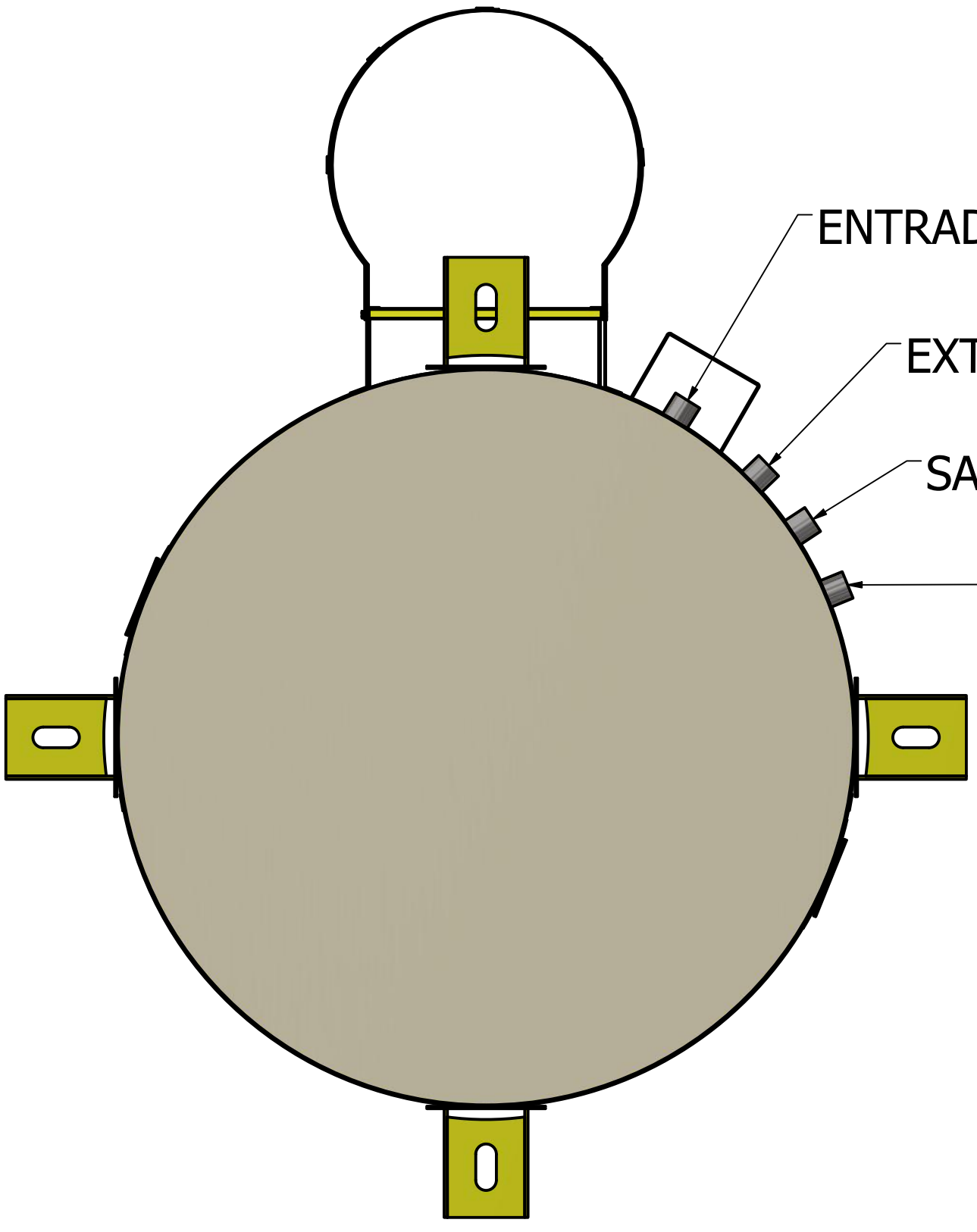
ENTRADA 1 1/2"

ENTRADA 1 1/2"

EXTRAVASOR 1 1/2"

SAÍDA 1 1/2"

DRENO 1 1/2"



4

3

2

1

D

D

C

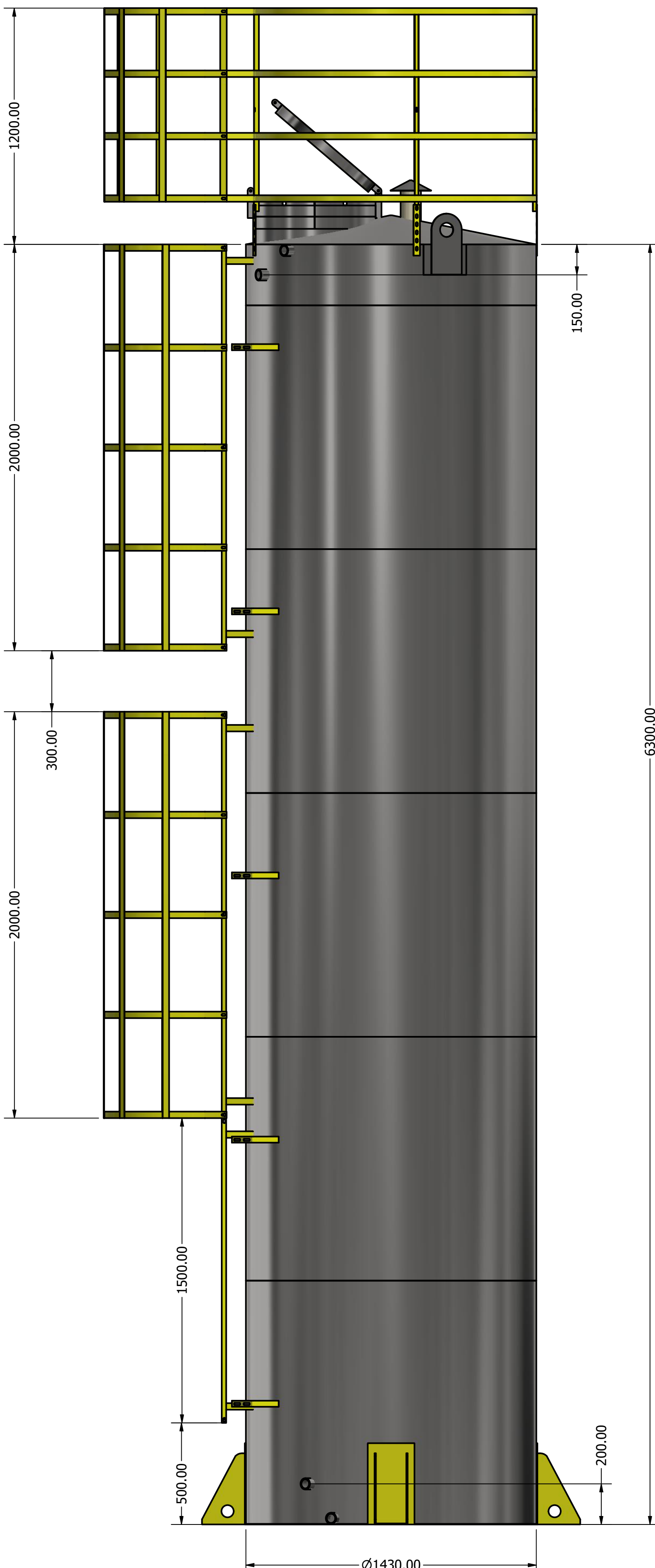
C

B

B

A

A



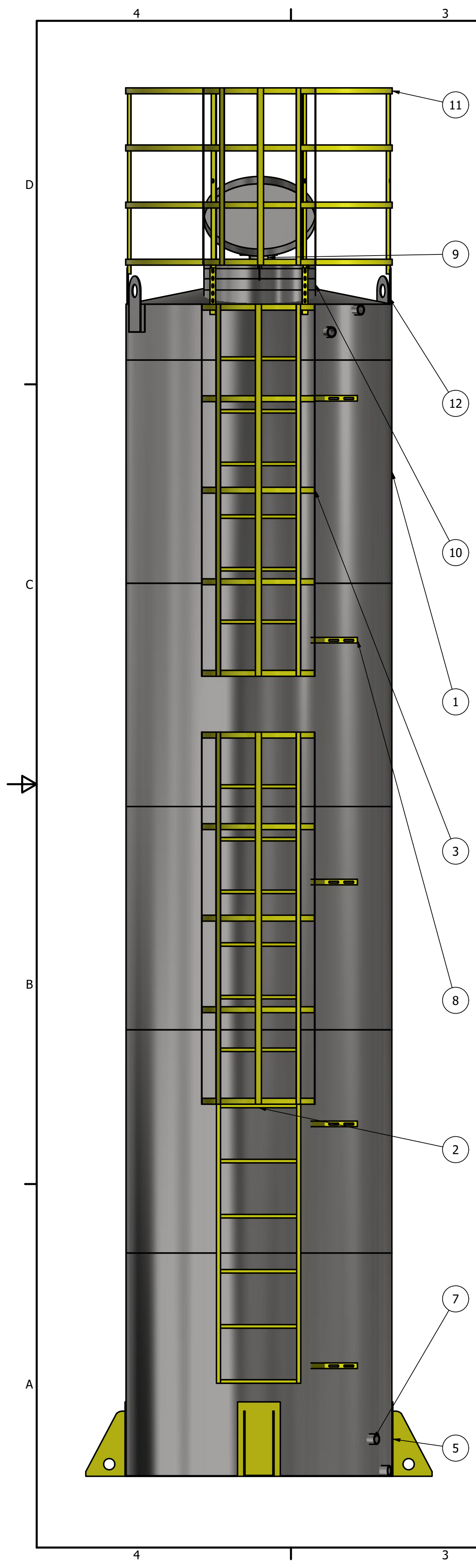
4

3

2

1

▽



LISTA DE PEÇAS			
ITEM	QTD	NÚM. DE PEÇA	MASSA
2	1	escada 1.5 metros	3,767 kg
3	2	escada guarda corpo 2 metros	14,786 kg
5	4	pes fixo	8,669 kg
6	20	DEGRAU INTERNO CANTONEIRA	0,748 kg
7	4	ISO 4144 - Bolsa S2 1 1/2	0,322 kg
8	5	suporte tubulação	0,285 kg
9	1	respiro	1,271 kg
10	1	BOCA INSPEÇÃO 600 MM + PESCOÇO	8,979 kg
11	1	GRADE SEGURANÇA 1430	16,623 kg
12	2	orelha guindaste	2,347 kg

